

Alpha Scents, Inc.
The Natural Choice.

Providing high-quality products to reduce or eliminate the use of pesticides.



DIGITAL CATALOG

2025 PRODUCT CATALOG

www.alphascents.com • 360 S. Sequoia Pkwy., Canby, OR 97013 • Main Phone +1 (503) 342-8611 • Email: sales@alphascents.com



Effective, Selective, Pest Management Products.

Our purpose is to manufacture high-quality products that our customers can employ to reduce or eliminate the use of pesticides. To accomplish this, we seek to build strong relationships with our customers that go well beyond the sale of products.



Residue-Free Pest Control Products.

Alpha Scents has a robust development program in place that is currently evaluating and developing products to attract and eliminate insects for home use and crops.

ABOUT US



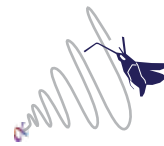
At Alpha Scents Inc., we research, register, manufacture and market pheromone-based products for insect monitoring and control. Our products are designed to significantly reduce the use of pesticides and provide a more environmentally friendly method of insect management. We provide our customers with the best quality products on the market by ensuring that manufacturing is done by skilled technicians and under the direct supervision of Ph.D. Chemical Ecologists.

Founded in 2007 by Darek Czokajo, Alpha Scents is customer focused, embracing honesty, respect, trust and support. We are clear that the vision for the company is shaped by a desire to be loyal to all stakeholders, including vendors and its employees. We attend international symposiums and tradeshow throughout the world. Alpha Scents is on the forefront of research and development of manufacturing pheromone-based products for insect monitoring and control. Above all, we have learned that what's most important in our business practice is honest dealings with concerned growers, collaborators, vendors and employees.

We have an innovative development program. Fast order fulfillment - often ship the same day order is placed. For additional information, please refer to our website <https://alphascents.com/>



INTEGRATED PEST MANAGEMENT



There are two primary components of monitoring products: traps and lures. Insect lures consist of an attractant, either a pheromone, kairomone or a combination of the two, formulated into a release device. Pheromones are chemicals that trigger a social response in members of the same species. Kairomones on the other hand, are chemicals emitted by one species that signal members of a different species. For example, plants will give off chemicals, called volatiles, that will attract insects that feed on that plant. Insect trap designs will vary depending on the targeted pest and they can be made from numerous materials.

Alpha Scents uses only No-Mess Adhesive in our insect traps, so you don't have to worry about getting glue all over your clothes, vehicles, or hands. While conventional commercial growers use monitoring products for the purpose of timing control product application (usually pesticides), many people use monitoring products to help manage insect populations, which, for example, are crucial for an organic grower.



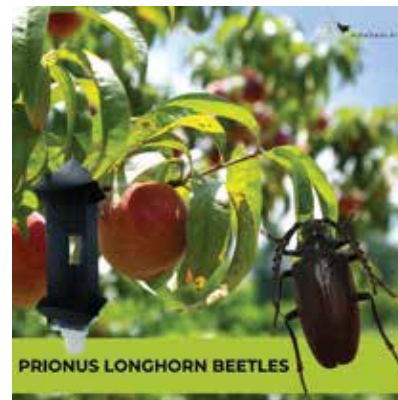
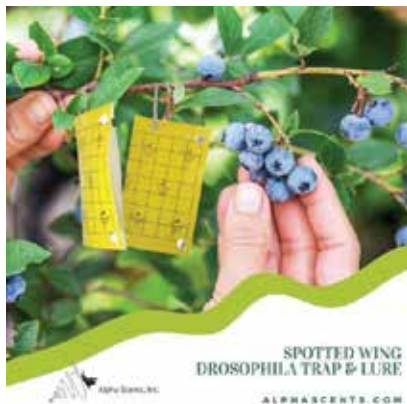
Pest Management

It is important to understand that the purpose of insect traps and lures is to monitor pest populations so that effective management techniques can be timed to optimize efficacy. Monitoring products are not designed to control insect populations by themselves. Insect traps and lures have been used successfully in mass-trapping programs. These programs have reduced pest populations below the economic threshold over time. However, you should consult with an extension agent or other pest control professional prior to employing this technique.

ALPHA SCENTS - THE NATURAL CHOICE



Integrated Pest Management (IPM) is the cornerstone of modern pest management techniques. IPM relies on a broad-based approach designed to keep pest populations below the level at which they cause economic damage. IPM does not mandate organic pest control. However, it does seek to control pests with the least amount of disruption to the natural eco-system and therefore encourages use of sustainable pest control practices.

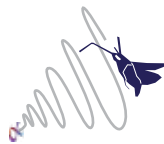


Because IPM does not seek to eradicate all insects, the costs of pest control can be reduced through the implementation of an IPM program. Traditionally, the role of insect traps and lures has been to monitor for the presence of pests that can pose a threat to crops.



Once a pest population reaches a specified level, usually determined by a local extension agent or other crop advisor, the grower would apply pesticides or other pest control products. Through proper timing of control products, the grower can maximize the efficacy of his or her insect control program.

Alpha Scents - Insect Monitoring Systems



CUCUMBER BEETLE

Home Use Cucumber Beetle Trap and Lure includes Yellow Sticky Card Trap and Lure - must be used together

Sticky traps should be placed horizontally near plants spaced at least 100 feet apart over a field. The number of beetles on traps is recorded each time the traps are changed. The traps are typically changed every seven days but can last 30 or more days without significant reduction in catching ability. Since adult emergence can stretch over a period of 6-9 weeks, the traps should remain in the field entire time. If the economic threshold for yellow sticky traps of 6 beetles per day is reached there is a high potential for problems the following spring.



PANTRY MOTH TRAP AND LURE

Home Use Pantry Moth Kit includes Jackson Trap sticky liner and Lure - must be used together

Place traps near the food source. Do not use too many traps - 1 or 2 per room is sufficient. Using too many traps will confuse moths and reduce trap effectiveness. Monitor traps closely and replace as needed. CULTURAL & PHYSICAL CONTROL: Store dry and bulk food in a tight-fitting container. Clean cupboards and shelves on a regular basis. Clean used and old containers with soap before using for food storage.



SPOTTED WING DROSOPHILA TRAP & LURE

Home Use Spotted Wing Drosophila Trap includes Folding Yellow Sticky Card Trap and Lure - must be used together

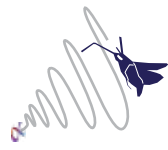
Use Back-folded Yellow Card. Place traps before fruit begins to ripen and prior to flies beginning to lay eggs. Traps should be hung in the shade, among the foliage and near the fruit.



STINK BUG CLEAR PANEL TRAP AND LURE

Home Use Stink Bug Trap and Lure includes Clear Panel Trap and Lure- must be used together

The Alpha Scents Clear Panel Trap and Lure paired with a strong light is an effective way to remove dozens of stink bugs per week. You can hang the trap under the light on your porch and every evening you will capture several bugs. The late summer captures of BMSB adults and nymphs stages by traps baited with the pheromone are good indicators for the pest presence (or absence) in the garden and orchard.



VINEGAR FLY TRAP

Home Use Vinegar Fly Trap includes pre-baited trap

Place this convenient trap in displays of fruit, vegetables and pastry or wherever fruit flies may be a problem. The patented design allows easy use hidden within displays or standing freely on countertops or in display cases. Safe and effective, the non-toxic attractant is pre-measured and produces predictable results. Fruit fly populations are typically reduced 70%-80% or more.



WEBBING CLOTHES MOTH TRAP & LURE

Home Use Webbing Clothes Moth Trap and Lure

Hang trap or place sticky insert near affected objects (such as within or nearby a closet where damage may occur). CULTURAL & PHYSICAL CONTROL: Inspect darkened areas of room or house for moth activity. To prevent activity on clothes, brushing them frequently, freezing the object, or dry cleaning them can help remove moths. Vacuuming is another effective cultural control.



WINDOW BUG CATCHER

Home Use Window Bug Catcher - 3.2x9.5" - 2 pc. No lure is required

Insects are naturally attracted to the light and heat of a window. With the WindowBugCatcher™ trap insects get stuck on it and die. When the trap gets full of bugs simply peel it off the window and dispose of it with the trash. NON-TOXIC AND PESTICIDE-FREE.



CODLING MOTH PAPER DELTA TRAP AND LURE

Home Use Codling Moth Trap and Lure includes Paper Delta Trap and 8 week lure - must be used together

Place traps at the pink stage of bud development. Place the lure in the center of sticky bottom. Change the lure every five (5) weeks from May till September and the sticky as needed. Install at least one (1) trap per tree. Hang baited traps in the upper part of the tree crown. CULTURAL & PHYSICAL CONTROL: Remove infested fruit from tree and from under the tree and dispose of them. DO NOT COMPOST THE INFESTED FRUIT.

TRAPS

Insect traps can be made of numerous materials with most traps being constructed using paper milk carton stock or plastic. Trap design will vary depending on the targeted pest. Most traps will have a glued surface which will capture the insect. Alpha Scents uses only No-Mess adhesive in our insect traps so you don't have to worry about getting glue all over your clothes, vehicles, or hands.

While conventional commercial growers use monitoring products for purposes of timing the application of their control products (usually pesticides), many people use monitoring products to help control insect populations. We are developing a series of Technical Bulletins that will provide trapping guidance. These brochures are available at <https://alphascents.com/pages/resources-resources.html>. Another good source of information on the proper use of traps is the California Department of Food and Agriculture Insect Trapping Guide available at http://www.cdffa.ca.gov/plant/pdep/Insect_Trapping_Guide/index.html.

SINGLE USE PAPER DELTA TRAPS (RED/CLEAR) TARGET PESTS: MOTHS (LEPIDOPTERA)



PRODUCT DETAILS	ONE PIECE	QTY 25	QTY 100
<ul style="list-style-type: none"> • SIZE: 7L x 4W x 4½ in. (18L x 10W x 11.4H cm) • STICKY AREA (INTERIOR ONLY): 3-sided • GRID SIZE: 1x1 in. (2.5 x 2.5 cm) 	\$3.40	\$47.00	\$178.00

MULTI-SEASON PLASTIC DELTA TRAPS (RED/WHITE) - TARGET PESTS: MOTHS (LEPIDOPTERA)



PRODUCT DETAILS	ONE PIECE TRAP	QTY 25 TRAP	QTY 100 TRAP
<ul style="list-style-type: none"> • SIZE: 11L x 7½W x 5H in (28L x 19W x 13Hcm) • STICKY AREA (INTERIOR ONLY): 7x7in (18 x 18cm) • GRID SIZE: 1x1in (2.5 x 2.5cm) 	\$6.95	\$121.00	\$485.00
	ONE PIECE LINER	QTY 25 LINER	QTY 100 LINER
	\$1.90	\$32.00	\$101.00

MULTI-USE JACKSON TRAPS - TARGET PESTS: FRUIT FLIES, MIDGES



PRODUCT DETAILS	ONE PIECE TRAP	QTY 25 TRAP	QTY 100 TRAP
<ul style="list-style-type: none"> • SIZE: 5L x 3½W x 3¼ H • STICKY LINER: 5.5 x 3.375in (14 x 8.5cm) 	\$2.30	\$38.00	\$125.00
	ONE PIECE LINER	QTY 25 LINER	QTY 100 LINER
	\$0.90	\$15.30	\$51.00

WING TRAP - TARGET PESTS: MOTHS (LEPIDOPTERA)



PRODUCT DETAILS		ONE PIECE	QTY 25	QTY 100
<ul style="list-style-type: none">• SIZE: 4.5 x 9 x 11in (11 x 23 x 28cm)• FEATURES: recording chart printed on trap	Complete Trap System	\$4.60	\$86.00	\$305.00
	Top	\$2.10	\$37.00	\$133.00
	Hanging Wire & Spacers	\$0.80	N/A	N/A
	No-Mess Adhesive Bottom	\$2.40	\$41.00	\$142.00

TRAPS



ADHESIVE ROLL TRAPS - TARGETED PESTS: FRUIT FLIES, CUCUMBER AND OTHER BEETLES, APHIDS, WHITE FLIES, HOPPERS, WASPS, WESTERN FLOWER AND OTHER THRIPS, NUISANCE FLIES

PRODUCT DETAILS	WIDTH	PRICE
<ul style="list-style-type: none"> • INSTALLATION: Easy to use with or without lures. Roll clips are available (\$2.00 each). • LENGTH: Blue and yellow rolls 328ft (100m) long (adhesive double sided). Clear rolls 100ft (30.5m) long (adhesive single sided). 	4in (10cm)	\$64.00
	7.9in (20cm)	\$101.00
	11.8in (30cm)	\$140.00
	CLEAR 6in x 100ft	\$153.00

RECTANGLE CARD TRAPS - NO-MESS ADHESIVETM, WEATHER RESISTANT, BIO-DEGRADABLE



PRODUCT DETAILS YELLOW CARD	ONE PIECE	QTY 25	QTY 100
<ul style="list-style-type: none"> • FEATURE: 3 hanger holes for stability • CARD SIZE: 8 x 5½ in (18 x 14cm) • GRID SIZE: 1 x 1in (2.5 x 2.5c) • Double-sided 	\$2.60	\$42.00	\$153.00
4X6 in. YELLOW CARD	\$1.10 each any quantity		



BACK FOLDING YELLOW CARD	ONE PIECE	QTY 25	QTY 100
<ul style="list-style-type: none"> • FEATURE: 3 hanger holes for stability • CARD SIZE: 8 x 5½ in (18 x 14cm) • GRID SIZE: 1 x 1in (2.5 x 2.5c) • Double-sided 	\$3.10	\$51.00	\$178.00



ASIAN CITRUS PSYLLID (ACP) TRAP	ONE PIECE	QTY 25	QTY 100
<ul style="list-style-type: none"> • CARD SIZE: 8 x 5½ in (18 x 14cm) • GRID SIZE: 1 x 1in (2.5 x 2.5cm) • Double-sided 	\$2.60	\$42.00	\$153.00



BLUE / YELLOW CARD	ONE PIECE	QTY 25	QTY 100
<ul style="list-style-type: none"> • CARD SIZE: 8 x 3½ in (18 x 9cm) • GRID SIZE: 1 x 1 in (2.5 x 2.5cm) • Double-sided 	\$3.00	\$44.00	\$165.00



BLUE CARD	ONE PIECE	QTY 25	QTY 100
<ul style="list-style-type: none"> • CARD SIZE: 8 x 3½ in (18 x 9cm) • GRID SIZE: 1 x 1 in (2.5 x 2.5cm) • Double-sided 	\$3.00	\$44.00	\$165.00

TRAPS



CLEAR PANEL TRAP (DOUBLE-SIDED) *LOW COST ALTERNATIVE TO BMSB TRAP

PRODUCT DETAILS	WIDTH	PRICE
<ul style="list-style-type: none"> Single use, passive monitoring system, use with or without lure 	12in x12in	\$2.60
	6ft x12in	\$15.30



SCALE CARD TRAPS WITH UCR GRID - TARGET PESTS: SCALE INSECTS

PRODUCT DETAILS	ONE PIECE	QTY 25	QTY 100
<ul style="list-style-type: none"> SIZE: 6 x 3.5in (15.2 x 9cm) GRID SIZE 1/2 x 1/2 in (1.3 x 1.3cm) Double-sided 	\$2.60	\$32.00	\$101.00



NATURAL CATCH PLUS® - PRE-BAITED FRUIT FLY TRAP

PRODUCT DESCRIPTION	ONE PIECE	QTY 25	QTY 100
Controls fruit/vinegar flies (Drosophila). Safe to use in food preparation, dining and display areas. Life span 30+ days. Pesticide-free. Non-toxic attractant.	\$9.60	\$190.00	\$737.00

UNI-TRAP - TARGET PESTS: NON-SATURATING TRAP FOR CATCHING HIGH NUMBERS OF MOTHS, WEEVILS, AND OTHER FLYING INSECTS



PRODUCT DETAILS	ONE PIECE	QTY 25	QTY 100
<ul style="list-style-type: none"> COLORS: green, yellow, multicolor (green/yellow/white) DIMENSIONS: 9 x 7in (23 x 18cm) BUCKET VOLUME: 1 quart (.95 liters) CONSTRUCTION: heavy gauge plastic 	\$16.50	\$333.00	\$1270.00

SOLARIZED NIGHT LIGHTS



PRODUCT DETAILS	PRICE
<ul style="list-style-type: none"> Complete assembly for Uni-Trap May be attached to Panel Trap, Water Trap and other monitoring systems Colors white - Tomato Leafminer, green - Sweet Potato Weevil, UV - Coconut Rhinoceros Beetle 	\$5.10

TRAPS

UNI-TRAP WITH EXTENSIONS - EFFECTIVE FOR: NOCTUID MOTHS, SWEET POTATO WEEVIL AND OTHER BEETLES AND MOTHS



PRODUCT DETAILS	ONE PIECE	QTY 25	QTY 100
<ul style="list-style-type: none"> Designed originally for the pineapple industry to monitor White Grubs, <i>Poppilia bipunctata</i> Colors Yellow or Green Extensions 	\$16.50	\$333.00	\$1270.00

PANEL TRAP - TARGET PESTS: FORESTRY BEETLES, WASPS, AND RHINOCEROS BEETLE



PRODUCT DETAILS	ITEMS	ONE PIECE	25 CASE	100 CASE
<ul style="list-style-type: none"> ASSEMBLY SIZE: 44H x 18W x 18L inch (112 x 46 x 46cm) FEATURE: Collapsible for storage OPTIONS: Slippery body Coating. 	Trap Complete	\$33.00	\$698.00	\$2414.00
	Collecting Cup Retainer	\$0.33		
	Collecting Cup	\$5.70		
	Wire Hanger	\$0.80		

BROWN MARMORATED STINK BUG (BMSB) TRAP



PRODUCT DETAILS	ONE PIECE	QTY 25	QTY 100
<ul style="list-style-type: none"> MULTI-SEASON TRAP Deploy with HALHAL lure (sold separately) 	\$36.30	\$792.00	\$3180.00

TROPICAL FRUIT FLIES TRAPS: BIO OR MCPHAIL



PRODUCT DETAILS	TRAP	ONE PIECE
<ul style="list-style-type: none"> MULTI-SEASON TRAP Use with desired species lure 	Bio Trap	\$6.60
	McPhail Trap	\$15.70

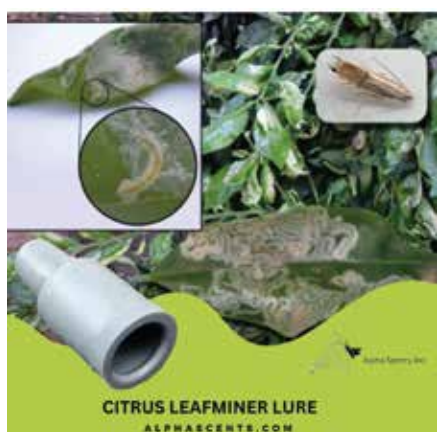
ASSEMBLY: All assembly instruction can be found on our website or video instructions can be found on the Alpha Scents, Inc. YouTube channel.

NOTES: All adhesive cards can be cut with household scissors. Attach 2 yellow card traps end-to-end and form into a tube for increased capture rates. Easy removal of specimens and cleanup with solvent (available upon request). Use 2 hangers with extra hanger holes to reduce twisting in high wind, to hang between vine wires, to attach trap horizontally from a stake, to hang from rope strung over rows.

LURES

Insect lures consist of an attractant or semiochemical formulated into release device to lure a target insect into an insect trap. Most insect lures use one of two types of semiochemicals - either a pheromone or a kairomone. Pheromones are chemicals that trigger a social response in members of the same species. Often sex pheromones are used. Sex pheromones are released female or male insects to attract opposite sex for purpose of mating. Kairomones, on the other hand, are chemicals emitted by one species that signal members of a different species.

For example, plants will give off chemicals, called volatiles, that will attract insects that feed on that plant. Insect lures may consist of a sex pheromone, an aggregation pheromone, a kairomone or a combination of two or more of these chemicals. The goal is to use whichever attractant will be effective in luring the insect into the trap. A release device is merely the substrate that holds the semiochemical. The chosen substrate together with the amount of semiochemical will determine its release rate. The release rate impacts both how well the lure works and how long it will last in the field.



Most moths lures are in the form of rubber septum, either in red or gray or white. However, many lures use various membrane type dispensers, plastic vials or bulbs.

Alpha Scents Lures Feature

- An Eco-Friendly Solution: No harmful chemicals, just natural ingredients to protect your garden, crops or orchards sustainably.
- Easy Application: Simple to set up and maintain, ensuring hassle-free protection all season long.

LURES

Additional lures available on our website/pdf catalog.

PEST CODE	COMMON ENGLISH PEST NAME	LATIN PEST NAME	ONE PIECE	QTY 25	QTY 100
APINLO	Alpha-pinene Lure			\$6.40 ea.	
APINHI	Alpha-pinene UHR Lure			\$8.90 ea.	
AMBRO	Ambrosia Beetle Lure	Xyleborus, Xylosandrus, Xyleborinus & More		\$14.00 ea.	
SYNMYO	Apple Clearwing Moth Lure	Synanthedon myopaeformis	\$5.60	\$89.00	\$343.00
DASMAL	Apple Leaf Gall Midge Lure	Dasineura mali		\$10.10 ea.	
RHAPOM	Apple Maggot Lure	Rhagoletis pomonella	\$5.60	\$89.00	\$343.00
DIACIT	Asian Citrus Psyllid Lure	Diaphorinia citri	\$3.50	\$44.00	\$153.00

PEST CODE	COMMON ENGLISH PEST NAME	LATIN PEST NAME	ONE PIECE	QTY 25	QTY 100
OSTFUR	Asian Corn Borer Lure	Ostrinia furnacalis	\$3.50	\$44.00	\$153.00
ANOGLA	Asian Longhorn Beetle Lure	Anoplophora glabripennis		\$19.00 ea.	
STECAT	Avocado Seed Moth Lure	Stenomoma catenifer	\$5.60	\$89.00	\$343.00
DIABAL	Banded Cucumber Beetle Lure	Diabrotica balteata	\$5.60	\$89.00	\$343.00
TAPBIC	Beech Bark Beetle Lure	Taphrorychus bicolor		\$6.90 ea.	
SPOEXI	Beet Armyworm Lure	Spodoptera exigua	\$3.50	\$44.00	\$153.00
MAMCON	Bertha Armyworm Lure	Mamestra configurata	\$3.50	\$44.00	\$153.00
RHAFAU	Black Cherry Fruit Fly Lure	Rhagoletis fausta	\$5.60	\$89.00	\$343.00
AGRIPS	Black Cutworm Lure	Agrotis ipsilon	\$3.50	\$44.00	\$153.00
SILADI	Black Fig Fly Lure	Silba adipata		\$2.20 ea.	
RHONAE	Blackheaded Fireworm Lure	Rhopobota naevana	\$3.50	\$44.00	\$153.00
XYLGER	Black Stem Borer Lure	Xylosandrus germanus		\$14.00 ea.	\$343.00
CYDPER	Box Tree Moth Lure	Cydalima perspectalis	\$3.50	\$44.00	\$153.00
BONSAL	Brazilian Apple Leafroller Lure	Bonagota salubricola	\$5.60	\$89.00	\$343.00
HALHAL	Brown Marmorated Stink Bug	LureHalyomorpha halys	\$7.90	\$146.00	\$540.00
TETFUS	Brown Spruce Longhorn Beetle Lure	Tetropium fuscum		\$14.00 ea.	
PLASTA	Brown-winged Green Bug Lure	Plautia stali	\$5.60	\$89.00	\$343.00
TRINI	Cabbage Looper Lure	Trichoplusia ni	\$3.50	\$44.00	\$153.00
CACCAC	Cactus Moth Lure	Cactoblastis cactorum	\$3.50	\$44.00	\$153.00
AONAUR	California Red Scale Lure	Aonidiella aurantii	\$3.50	\$44.00	\$153.00
ECTCER	Carob Moth Lure	Ectomyelois ceratoniae	\$5.60	\$89.00	\$343.00
CERAMB	Cerambycids beetles - check https://www.alphascent.com/resources/resources.html for available species				
LASSER	Cigarette Beetle Lure	Lasioderma serricorne	\$5.60	\$89.00	\$343.00
PHYCIT	Citrus Leafminer Lure	Phyllocnistis citrella	\$5.60	\$89.00	\$343.00
PLACIT	Citrus Mealybug Lure	Planococcus citri	\$5.60	\$89.00	\$343.00
ORYRHI	Coconut Rhinoceros Beetle Lure	Oryctes rhinoceros		\$7.60 ea.	
CYPO01	Codling Moth 5-Week Lure	Cydia pomonella 5-week	\$3.50	\$44.00	\$153.00
CYPO08	Codling Moth 8-Week Lure	Cydia pomonella 8-week	\$3.60	\$46.00	\$165.00
CYPO10	Codling Moth 10x Lure (Mating disruption only)	Cydia pomonella 10x	\$3.70	\$51.00	\$178.00
CYPOFM	Codling Moth Female/Male Lure	Cydia pomonella	\$5.60	\$89.00	\$343.00
CYPODFM+	Codling Moth Female/Male Plus Lure	Cydia pomonella	\$7.90	\$146.00	\$540.00
CMOFMLR	Combo Lure - Codling Moth, Oriental FM, Leafroller		\$5.60	\$89.00	\$343.00
DIPPIN	Common Pine Sawfly Lure	Dipiron pini		\$27.80 ea.	
EUSCON	Conspers Stink Bug Lure	Euschistus conspersus	\$6.70	\$110.00	\$426.00
HELZEA	Corn Earworm Lure	Helicoverpa zea	\$3.50	\$44.00	\$153.00
SESNON	Corn Stalk Borer Lure	Sesamia nonagrioides	\$3.50	\$44.00	\$153.00
HELARM	Cotton Bollworm Lure	Helicoverpa armigera	\$3.50	\$44.00	\$153.00
SPOLITO	Cotton Leafworm Lure	Spodoptera littoralis	\$3.50	\$44.00	\$153.00
SYNTIP	Currant Clearwing Moth Lure	Synanthedon tipuliformis	\$5.60	\$89.00	\$343.00
PLUXYL	Diamondback Moth Lure	Plutella xylostella	\$3.50	\$44.00	\$153.00
SYNSCI	Dogwood Borer Lure	Synanthedon scitula	\$5.60	\$89.00	\$343.00
MCH	Douglas-Fir Beetle Antiaggregation Pheromone, MCH Dendroctonus pseudotsugae MCH			\$3.50 ea.	
DENPSE	Douglas-Fir Beetle Lure	Dendroctonus pseudotsugae		\$8.30 ea.	
CONORE	Douglas-Fir Cone Gall Midge Lure	Contarinia oregonensis	\$6.70	\$110.00	\$426.00
IPSGRA	Eastern Fivespined Ips Lure	Ips grandicollis		\$8.90 ea.	
AGRPLA	Emerald Ash Borer Lure	Agrilus planipennis	\$5.60	\$89.00	\$343.00
IPSPER	Engraver Beetle Perturbatus Lure - 2 comp.	Ips perturbatus		\$8.90 ea.	
ETOHHI	Ethanol UHR Lure			\$8.90 ea.	
ARGPUL	Eulia Moth Lure	Argyrotaenia pulchellana	\$3.50	\$44.00	\$153.00
RHACER	European Cherry Fruit Fly Lure	Rhagoletis cerasi - EU	\$5.60	\$89.00	\$343.00
OSNUNY	European Corn Borer - NY Lure	Ostrina nubilalis	\$3.50	\$44.00	\$153.00
OSNUIA	European Corn Borer- Iowa Lure	Ostrina nubilalis	\$3.50	\$44.00	\$153.00
COSCOS	European Goat Moth Lure	Cossus cossus	\$3.50	\$44.00	\$153.00
EUPAMB	European Grape Berry Moth Lure	Eupoecilia ambiguella	\$3.50	\$44.00	\$153.00

PEST CODE	COMMON ENGLISH PEST NAME	LATIN PEST NAME	ONE PIECE	QTY 25	QTY 100
LOBBOT	European Grapevine Moth Lure	Lobesia botrana	\$3.50	\$44.00	\$153.00
DUPFOV	European Pepper Moth Lure	Duponchelia fovealis	\$5.60	\$89.00	\$343.00
RHYBUO	European Pine Shoot Moth Lure	Rhyacionia buoliana	\$3.50	\$44.00	\$153.00
IPSTYP	European Spruce Bark Beetle Lure	Ips typographus		\$8.90 ea.	
SPIOCE	Eye Spotted Budmoth Lure	Spilonota ocellana	\$3.50	\$44.00	\$153.00
SPOFRU	Fall Armyworm Lure	Spodoptera frugiperda	\$3.50	\$44.00	\$153.00
CRYLEU	False Codling Moth Lure	Cryptophlebia leucotreta	\$5.60	\$89.00	\$343.00
MELLAT	Filbert Worm Lure	Melissopus latiferreanus	\$3.50	\$44.00	\$153.00
DIOABI	Fir Coneworm Lure	Diorctria abietivorella	\$5.60	\$89.00	\$343.00
PHYLLO	Flea Beetle Lure	Phyllotreta spp.	\$5.60	\$89.00	\$343.00
ENDVIT	Grape Berry Moth Lure	Endopiza viteana	\$3.50	\$44.00	\$153.00
DESFUN	Grape Leaf Folder lure	Desmia funeralis	\$5.60	\$89.00	\$343.00
PSEMAR	Grape Mealybug Lure	Pseudococcus maritimus	\$5.60	\$89.00	\$343.00
LYMDIS	Gypsy (Spongy) Moth Lure	Lymantria dispar	\$3.50	\$44.00	\$153.00
MURHIS	Harlequin Bug Lure	Murgantia histrionica	\$5.60	\$89.00	\$343.00
CYDCAR	Hickory Shuckworm	Cydia caryana	\$3.50	\$44.00	\$153.00
CRYGNI	Honeydew Moth Lure	Cryptoblabes gnidiella	\$3.50	\$44.00	\$153.00
PLOINT	Indian Meal Moth Lure	Plodia interpunctella	\$3.50	\$44.00	\$153.00
MONALT	Japanese Pine Sawyer Lure	Monochamus alternatus		\$14.00 ea.	
MONALT PLUS	Japanese Pine Sawyer PLUS Lure	Monochamus alternatus		\$17.50 ea.	
TROGRA	Khapra Beetle Lure	Trogoderma granarium	\$3.50	\$44.00	\$153.00
TOMPIN	Larger Pine Shoot Beetle Lure	Tomicus piniperda		\$10.10 ea.	
SPAPIL	Leaf-rolling Tortrix Lure	Sparganothis pilleriana	\$3.50	\$44.00	\$153.00
ACRASS	Leek Moth Lure	Acrolepiopsis assectella	\$3.50	\$44.00	\$153.00
ZEUPYR	Leopard Moth Lure	Zeuzera pyrina	\$5.60	\$89.00	\$343.00
ELALIG	Lesser Cornstalk Borer Lure	Elasmopalpus lignosellus	\$5.60	\$89.00	\$343.00
BATAMY	Lesser Date Moth Lure	Batrachedra amydraula	\$3.50	\$44.00	\$153.00
EPIPOS	Light Brown Apple Moth Lure	Epiphyas postvittana	\$3.50	\$44.00	\$153.00
PODSYR	Lilac Borer Lure	Podosesia syringae	\$5.60	\$89.00	\$343.00
MONOCH	Longhorn Beetle Lure	Monochamus spp.		\$14.00 ea.	
PSELON	Longtailed Mealybug Lure	Pseudococcus longispinus	\$5.60	\$89.00	\$343.00
CRYOMB	Macadamia Nut Borer Lure	Cryptophlebia ombrodelta	\$5.60	\$89.00	\$343.00
BUSFUS	Maize Stalk Borer Lure	Busseola fusca	\$3.50	\$44.00	\$153.00
CCAPPV	MedFly - Plant Odor Lure	Ceratitis capitata Plant Odor	\$5.60	\$89.00	\$343.00
CCAPTM	MedFly - Trimedlure Lure	Ceratitis capitata Trimedlure	\$5.60	\$89.00	\$343.00
BACCUC	Melon Fly Lure	Bactrocera cucurbitae	\$5.60	\$89.00	\$343.00
DENPON	Mountain Pine Beetle Lure	Dendroctonus ponderosae		\$7.60 ea.	
AMYTRA	Navel Orangeworm Lure	Amyelois transitella		\$6.40 ea.	
AMYTRAF/m	Navel Orangeworm Female/Male Lure	Amyelois transitella		\$5.60 ea.	
NOCTUID	Noctuid Moths Plant Volatile Lure	Noctuidae	\$5.60	\$89.00	\$343.00
SPOEXE	Nutgrass Armyworm Lure	Spodoptera exempta	\$3.50	\$44.00	\$153.00
PLAQUE	Oak Ambrosia Beetle Lure	Platypus quercivorus		\$7.60 ea.	
CHOROS	Oblique Banded Leafroller Lure	Choristoneura rosaceana	\$5.60	\$89.00	\$343.00
HYLBAJ	Old House Borer Lure	Hylotrupes bajulus		\$17.80 ea.	
DACOLE	Olive Fruit Fly Lure	Dacus oleae	\$7.90	\$146.00	\$540.00
PRAOLE	Olive Moth Lure	Prays oleae	\$3.50	\$44.00	\$153.00
PLASTU	Omnivorous Leafroller Lure	Platynota stultana	\$3.50	\$44.00	\$153.00
ARGCIT	Orange Tortrix Lure	Argyrotaenia citrana	\$3.50	\$44.00	\$153.00
DACDOR	Oriental Fruit Fly Lure	Dacus dorsalis	\$5.60	\$89.00	\$343.00
GRAMOL	Oriental Fruit Moth Lure	Grapholita molesta	\$3.50	\$44.00	\$153.00
PANHEP	Pandemis Heparana Lure	Pandemis heparana	\$3.50	\$44.00	\$153.00
CYDNIG	Pea Moth Lure	Cydia nigricana	\$3.50	\$44.00	\$153.00
BACZON	Peach Fruit Fly Lure	Bactrocera zonata	\$5.60	\$89.00	\$343.00
SYNEXI	Peach Tree Borer Lure	Synanthedon exitiosa	\$5.60	\$89.00	\$343.00

LURES

Additional lures available on our website/pdf catalog.

PEST CODE	COMMON ENGLISH PEST NAME	LATIN PEST NAME	ONE PIECE	QTY 25	QTY 100
ANALIN	Peach Twig Borer Lure	Anarsia lineatella	\$3.50	\$44.00	\$153.00
ACRNUX	Pecan Nut Casebearer Lure	Acrobasis nuxvorella	\$3.50	\$44.00	\$153.00
ACRNUXMx	Pecan Nut Casebearer (Mexican Str.) Lure	Acrobasis nuxvorella (Mx)	\$3.50	\$44.00	\$153.00
ANTEUG	Pepper Weevil Lure	Anthonomus eugenii	\$5.60	\$89.00	\$343.00
IPSPIN	Pine Engraver Beetle Lure	Ips pini		\$7.60 ea.	
CONNEN	Plum Curculio - Benzaldehyde Lure	Conotrachelus nenuphar	\$6.70	\$110.00	\$426.00
GRAFUN	Plum Fruit Moth Lure	Grapholita funeberana	\$3.50	\$44.00	\$153.00
EUWALL	Polyphagous Shothole Borer Lure	Euwallacea spp. nr. fornicatus		\$7.60 ea.	
PHTOPE	Potato Tuber moth Lure	Phthorimaea operculella	\$3.50	\$44.00	\$153.00
PRIONUS	Prionus Longhorn Beetle Lure	Prionus All Species		\$7.60 ea.	
RHYFER	Red Palm Weevil Lure	Rhynchophorus ferrugineus	\$3.50	\$44.00	\$153.00
AROBUN	Red-Necked Longhorn Beetle Lure	Aromia bungii		\$5.60 ea.	
XYLGLA	Redbay Ambrosia Beetle Lure	Xyleborus glabratus		\$14.00 ea.	
QUAPER	San Jose Scale Lure	Quadraspidiotus perniciosus	\$3.50	\$44.00	\$153.00
SYNSEQ	Sequoia Pitch Moth Lure	Synanthedon sequoiae	\$5.60	\$89.00	\$343.00
SIRNOC	Sirex Wood Wasp Lure 3 component	Sirex noctilio		\$8.90 ea.	
PITCHA	Six-toothed Spruce Bark Beetle Lure	Pityogenes chalcographus		\$12.80 ea.	
RHPAL	South American Palm Weevil Lure	Rhynchophorus palmarum	\$3.50	\$44.00	\$153.00
ARGSPH	South American Tortrix Moth	Argyrotaenia sphaleropa	\$5.60	\$89.00	\$343.00
DENFRO	Southern Pine Beetle Lure	Dendroctonus frontalis		\$10.10 ea.	
PSEINC	Soybean Looper Lure	Pseudoplusia includens	\$3.50	\$44.00	\$153.00
SPASUL	Sparganothis Fruit Worm Lure	Sparganothis sulfureana	\$3.50	\$44.00	\$153.00
DIAUHO	Spotted Cucumber Beetle Lure	Diabrotica u. howardii	\$5.60	\$89.00	\$343.00
LYCDEL	Spotted Lantern Fly Lure	Lycorma delicatula	\$5.60	\$89.00	\$343.00
DROSUZ	Spotted Wing Drosophila Lure	Drosophila suzukii		\$5.80 ea.	
DENRUF	Spruce Beetle Lure	Dendroctonus refipennis		\$7.60 ea.	
MELCUC	Squash Vine Borer Lure	Melittia cucurbitae	\$5.60	\$89.00	\$343.00
ADOORA	Summerfruit Tortrix Lure	Adoxophyes orana	\$3.50	\$44.00	\$153.00
HOMELE	Sunflower Moth Lure	Homoeosoma electellum	\$3.50	\$44.00	\$153.00
CONNAS	Swede Midge Lure	Contarinia nasturtii		\$12.80 ea.	
CYLFOR	Sweet Potato Weevil Lure	Cylas formicarius	\$3.50	\$44.00	\$153.00
EUWFOR	Tea Shothole Borer Lure	Euwallacea fornicatus		\$7.60 ea.	
SPOLIT	Tobacco Cutworm Lure	Spodoptera litura	\$3.50	\$44.00	\$153.00
TUTABS	Tomato Leafminer Lure	Tuta absoluta	\$3.50	\$44.00	\$153.00
KEILYC	Tomato Pinworm Lure	Keiferica lycopersicella	\$3.50	\$44.00	\$153.00
PSUUNI	True Armyworm Lure	Psudaletia unipuncta	\$3.50	\$44.00	\$153.00
PLAIDE	Tufted Apple Budmoth Lure	Platynota ideausalis	\$3.50	\$44.00	\$153.00
TRICAM	Velvet Longhorn Beetle Lure	Trichopherus campestris		\$7.60 ea.	
PLAFIC	Vine Mealybug Lure	Planococcus ficus	\$3.50	\$44.00	\$153.00
RHACOM	Walnut Husk Fly Lure	Rhagoletis completa	\$5.60	\$89.00	\$343.00
PITJUG	Walnut Twig Beetle Lure	Pityophthorus juglandis	\$5.10	\$80.00	\$254.00
TINBIS	Webbing Clothes Moth Lure	Tineola bisselliella	\$5.60	\$89.00	\$343.00
LOXALB	Western Bean Cutworm Lure	Loxagrotis albicosta	\$3.50	\$44.00	\$153.00
RHAIND	Western Cherry Fruit Fly Lure	Rhagoletis indifferens	\$5.60	\$89.00	\$343.00
LEPOCC	Western Conifer Leaf-footed Bug Lure	Leptoglossus occidentalis		\$10.10 ea.	
FRAOCC	Western Flower Thrips Lure	Frankliniella occidentalis	\$3.50	\$44.00	\$153.00
HARBRI	Western Grapeleaf Skeletonizer Lure	Harrisina brillians	\$5.60	\$89.00	\$343.00
LEPZON	Western Leaf-footed Bug Lure	Leptoglossus zonatus		\$10.10 ea.	
PARROB	Western Poplar Borer Lure	Paranthrene robiniae	\$5.60	\$89.00	\$343.00
VESPUL	Yellow-jacket Wasp Lure	Vespula spp.	\$3.50	\$44.00	\$153.00

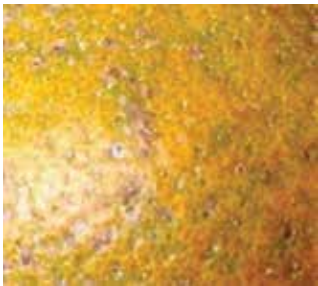
MATING DISRUPTION for California Red Scale, X-Mate CRS



X-Mate CRS is an easy to use mating disruption product for control of California Red Scale (*Aonidiella aurantii*), a pest that attacks all citrus plants. X-Mate CRS is pheromone based and is effective by confusing and preventing males from finding females. One device per tree is recommended to reduce reproduction and population reduction all season long.

Advantages:

- No harm to beneficial insects such as bees
- Residue-free and no contact with fruit
- Does not contain insecticide and is food-safe
- Waterproof and stays where you put it
- Compatible with all IPM technologies
- One application per season



X-Mate CRS is registered with the EPA (EPA Reg. No. 85354-6) and with the State of California.

ATTRACT & KILL For Citrus Leafminer, MalEX™ CLM



MalEx™ CLM offers potent attract and kill technology for Citrus Leafminer (*Phyllocnistis citrella*). This effective solution combines synthetic female pheromone to attract male moths and a knock-down pesticide that kills or disables them, thus preventing mating and infestation.

Advantages:

- No harm to beneficial insects such as bees
- Easy and accurate application without fruit contact
- No worker Re-Entry or Pre-Harvest Interval concerns
- Waterproof and stays where you put it
- Adaptable to all types of field sizes and layouts



MalEx™ CLM is registered with the EPA (EPA Reg. No. 85354-5). Not Registered in California.

GENERAL GUIDELINES

TRAP & LURES Sold Separately

Here are some guidelines that should always be followed regardless of the trap and lure that you are using:

- ✓ **Never put more than one lure in a trap.**
- ✓ **Always follow manufacturer's recommendations regarding replacing the lure and the trap or trap liner.**
- ✓ **Check the trap frequently. Never discard an old lure in the field.**
- ✓ **Most Alpha Scents lures have different field lives.**

Check the applicable technical bulletin that can be found at: www.alphascents.com.

In addition to using monitoring products and control products when indicated, cultural controls can also help reduce problems with unwanted insects. Specific actions will depend on the pest, crop and local conditions. However, as a general rule, proper sanitation such as removing fallen fruit, properly destroying pruned branches as well as preventing crops from overgrowing is recommended.

SHIPPING, RETURNS & PAYMENTS

SHIPPING POLICY:

- We ship prepaid and invoice you for the charges.
- Rush shipments available upon request.
- UPS and USPS are used whenever possible.
- Should your order exceed UPS size or weight limits, Common Carrier will be selected to speed delivery.

RETURNS:

- All sales are final.
- If a product is defective, we will replace it at no cost to you.
- Occasionally, prices will change without notice due to circumstances beyond our control.

CREDIT TERMS:

Orders from government agencies, schools, hospitals and existing customers are shipped on open accounts. New customers and international customers will be asked for payment at time of order. Alpha Scents account net 30 days.

PAYMENTS:



UPDATES:

Stay up to date on all our new research, promotions and day-to-day activities by following us on social media.



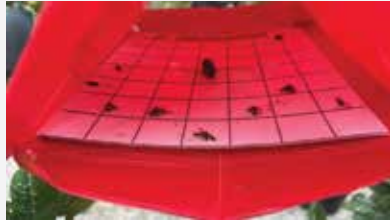
CUSTOMER REVIEWS

See what our customers are saying about our effective pesticide-free pest management products.

STX Citrus Fan ★★★★★

Great product!

I purchased the Citrus Leaf Miner tent with sticky trap and CLM Lures! Wow! I placed them late evening Thursday and by the next day after work I came home to check the trap and wow! It had leaf miners trapped! No chemicals or measuring to do. Just assemble apply and let the lures and trap do the work!



David Storts ★★★★★

Confident expectations

Ordered twice in the last 4 weeks! My ordering process was easy. The products I ordered were processed and delivered just as promised. I trust this company to provide my needs. Thank You, Alpha Scents!



Joshua Voyles ★★★★★

Very quick shipping!

Great experience. I have clients who don't normally have issues with SWD but have this season. Alpha scents communicated very thoroughly and got my traps to me the next day.



OUR STORY

Our story begins with some history of our founder - Dr. Darek Czokajlo

Since childhood, Darek was involved with biology clubs and interest groups, fueling his passion for the sciences and leading him to study forestry and entomology during his undergraduate and master's studies. In 1985 he started studying and experimenting with insect traps, in particular bark beetle traps baited with ethanol lures. This is how Darek started honing his specialization and began asking the intriguing question of, "How could we use scents to manage insects?" In 1989, right before the fall of Communism, Darek emigrated to Canada and in 1993 started his PhD program in the field of Insect Chemical Ecology in Syracuse, New York. After his graduation in 1998, one of his professors recommended Darek to a company in Portland, Oregon. This was a great and challenging opportunity as Darek was able to develop new lures, traps, and pheromone based pest management tools in forestry and later diversifying into agricultural entomology. During this time, he brought in many grants and began making key contacts in the industry, government and research communities. Because of his research, he was largely in charge of R&D and production from start to finish. Then, in 2007, Darek created Alpha Scents, Inc.



DR. DAREK CZOKAJLO
President and Founder

ABOUT OUR CEO

When speaking about entomology, he will laugh and say the interest began "in the womb." Driven by his passion for science and technology, he strives for economic security, which can be largely attributed to his upbringing in communist Poland. How do you become economically stable according to Darek? By building a company that is customer focused: embracing honesty, respect, trust and support, the rest are details. When discussing what characteristics Alpha Scents, Inc. reflects, it's clear that the vision for the company is shaped by a desire to be loyal to all stakeholders, including customers, vendors, and their employees.

Alpha Scents, Inc. - Our Commitment To You!

We commit to you, our customers. We offer freedom and flexibility with time and product combinations, and we guarantee to do it all with a great attitude.

Alpha Scents, because it just makes 'scents'.



PRESORTED
STANDARD AUTO
U.S. POSTAGE
PAID
SANTA ANA, CA
PERMIT #4833



DIGITAL CATALOG



www.alphascents.com • 360 S. Sequoia Pkwy., Canby, OR 97013 • Main Phone +1 (503) 342-8611 • Email: sales@alphascents.com

To opt-out from receiving our annual catalog in the future, go to: alphascents.com/pages/opt-out-of-mailing-list